



Producers of Quality Manufactured Stone & Thin Brick



Recreate Nature's Beauty





*Simply Natural,
Always Beautiful.*

The natural warmth and versatility of stone, coupled with your creative planning, can give your home or building the character and personality you desire. Veneerstone by Tejas Textured Stone captures the beauty and durability of natural stone while offering you many key advantages.

Veneerstone is a well established, highly respected producer of quality manufactured stone and thin brick. We have a solid reputation for creating products that are virtual replicas of natural stone in texture, shape, color and authenticity. Our surfaces mimic their natural counterparts because of our unique manufacturing process and strict quality controls.

Introduction..... 3
Austin Stone..... 4
Imperial Stack Stone..... 6
Field Stone..... 8
Ledge Stone.....10
Stack Stone.....12
Pacific LedgeStone..... 14
Weathered Edge.....16
River Rock..... 18
Limestone, Coral Stone & Cast Stone..... 20
Thin Brick..... 22
Creative Blend Ideas..... 24
Trim & Accessories.....26
Installation..... 28



Product Shown Above and Left:
Austin Stone - Mineral County
Ledge Stone w/ Field Stone Accents - Mineral County



Austin Stone - Canyon Blend

Austin Stone. Bring the look of the hill country limestone quarries to your project with the texture & colors of Austin Stone.

Application. Mortared
Pattern. Random

Flats. Heights of 1.75 to 9”, lengths 4.5 to 19”; with an average thickness of 1.5”
Corners. Heights of 3.75 to 6”, short return 2.5 to 2.625”, long return 7.625 to 9”; with an average thickness of 1.5”



AUTUMN



BUCKEYE



CANYON BLEND



CHALK



CREEDE



EL MONTE



MALBECK



MILLSAP



MINERAL COUNTY



SAVOY



SILVER



TEXAS CREAM

Austin Stone is also available in most colors presented in this brochure.
Colors and shades printed here are as true a match as the printing process will allow. For best matching results, please refer to actual samples.

Imperial Stack Stone



Imperial Stack Stone - Caramel

Imperial Stack Stone. Perfect for both formal & informal settings, The Imperial Stack profile is a component panel system that allows for a quick & efficient installation. Rich colors & textures combine to achieve the look that is sure to please even the most discriminating eye.

Application. Dry stacked

Pattern. Random

Flats. 4" x 8" , 4" x 12" and 4" x 20" inch panels, thickness is 3/4" to 1-5/8"

Corners. Height 4", short return 2.5", long return 10.5"; with an average thickness of 3/4" to 1-5/8".



Imperial Stack Stone



CARAMEL



CEDAR CITY



CREEDE



DESERT SAND



MESA GRAY



MILLSAP



PASCO



PINE SPRINGS



SAVOY



SILVER



SLATE



VENTURA

Colors and shades printed here are as true a match as the printing process will allow. For best matching results, please refer to actual samples.

Field Stone



Field Stone - Pine Springs

Field Stone. Rustic texture and irregular shapes, reminiscent of an Italian villa or the Napa wine country.

Application. Mortared

Pattern. Random

Flats. 3" x 1.5" to 16" x 18"; with an average thickness of 1.5"

Corners. Heights of 3.5 to 11", short return 2.625 to 3.25", long return 8 to 9.5"; with an average thickness of 1.5"

Field Stone



BLUE CREEK



CEDAR CITY



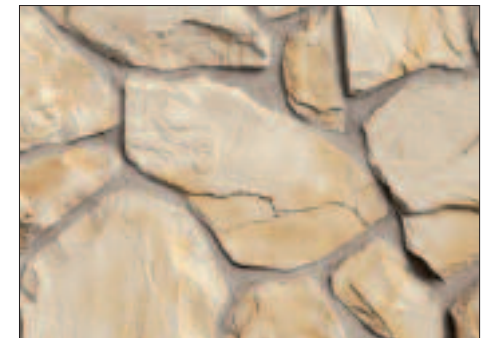
CREEDE



EL MONTE



MALBECK



MESA GRAY



MILLSAP



MINERAL COUNTY



PINE SPRINGS



SAVOY



SILVER



TRINIDAD

Field Stone is also available in most colors presented in this brochure.
Colors and shades printed here are as true a match as the printing process will allow. For best matching results, please refer to actual samples.

Ledge Stone



Ledge Stone - Mesa Grey

Ledge Stone. A long, narrow chiseled face gives Ledge Stone an ancient feeling, like that found in European architecture of centuries past.

Application. Dry stacked or mortared (recommended)

Pattern. Linear

Flats. Heights of 1.5" to 6", lengths of 6.75" to 19"; with an average thickness of 1.5"

Corners. Heights of 1.5 to 6", short return 2.875 to 3.25", long return 8 to 10"; with an average thickness of 1.5"

Ledge Stone



BLUE CREEK



CARAMEL



CHARDONNAY



CREEDE



HICKORY



MALBECK



MESA GRAY



MINERAL COUNTY



PINE SPRINGS



RUSTONE



SAVOY



SILVER

Ledge Stone is also available in most colors presented in this brochure.
Colors and shades printed here are as true a match as the printing process will allow. For best matching results, please refer to actual samples.

Stack Stone



Stack Stone - Hickory

Stack Stone. This style is a favorite of today's contemporary architects. When installed, the long and narrow Stack Stone, with its square edges, provides a modern look.

Application. Dry stacked or mortared (recommended)

Pattern. Linear

Flats. Heights of 1 to 4", lengths of 4.5 to 18"; with an average thickness of 1.5"

Corners. Heights of 1 to 4", short return 2.25 to 2.625", long return 6 to 9.25"; with an average thickness of 1.5"

Stack Stone



BLUE CREEK



CARAMEL



CEDAR CITY



CREEDE



MALBECK



MESA GRAY



MILLSAP



MINERAL COUNTY



RUSTONE



SAVOY



SILVER



TEXAS CREAM

Stack Stone is also available in most colors presented in this brochure.
Colors and shades printed here are as true a match as the printing process will allow. For best matching results, please refer to actual samples.

Pacific LedgeStone



Pacific LedgeStone - Blue Creek

Pacific LedgeStone. This distinctive profile combines the straight lines of Stack Stone and a rugged Ledge Stone surface to create dramatic texture contrasts and beautiful shadows. This pattern displays exquisite detail in any lighting, and is perfect for interior or exterior use.

Application. Dry stacked or mortared (recommended)

Pattern. Random

Flats. Heights of 1.5 to 6", lengths of 4 to 19", with an average thickness of 1.5"

Corners. Heights of 1.375 to 6", short return 3.625", long return 10"; with an average thickness of 1.5"

Pacific LedgeStone



BLUE CREEK



BUCKEYE



CEDAR CITY



CREEDE



EL MONTE



INDIAN SPRINGS



MILLSAP



MINERAL COUNTY



MT TRUMBULL



PINE SPRINGS



REDWOOD



SOLSTICE

Pacific LedgeStone is also available in most colors presented in this brochure. Colors and shades printed here are as true a match as the printing process will allow. For best matching results, please refer to actual samples.

Weathered Edge



Weathered Edge - Blue Creek

Weathered Edge. Achieve the natural, distressed look of stone exposed to the elements with Weathered Edge. With a unique shadowing effect, the product is both strong and subtle, complementing any architecture from rustic to modern.

Application. Mortared

Pattern. Random

Flats. Heights of 2 to 9", lengths of 7.25 to 19.5", with an average thickness of 1.5"

Corners. Heights of 2 to 9", short return 2.5 to 2.875", long return 7.875 to 10.75"; with an average thickness of 1.5"

Weathered Edge



BLUE CREEK



CREEDE



HARVARD



MALBECK



MESA GRAY



MILLSAP



MINERAL COUNTY



REDWOOD



RUSTONE



SILVER



TEXAS CREAM



TRINIDAD

Weathered Edge is also available in most colors presented in this brochure.
Colors and shades printed here are as true a match as the printing process will allow. For best matching results, please refer to actual samples.



River Rock - Silver

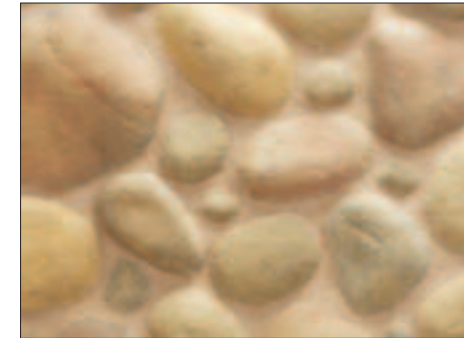
River Rock. With its smooth round and irregular shapes, River Rock has a unique appearance found naturally in rivers and creeks after years of erosion from running water.

Application. Mortared

Pattern. Random

Flats. Diameter of 2" to 13"; average thickness of 1.4"

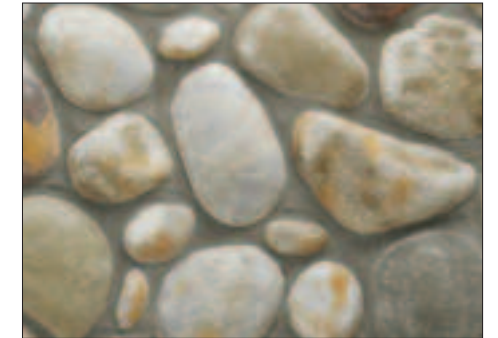
Corners. Diameter of 2.5" to 9", short return 2.5 to 3", long return 5.5 to 7"; with an average thickness of 1.75"



CREEDE



MILLSAP



MINERAL COUNTY



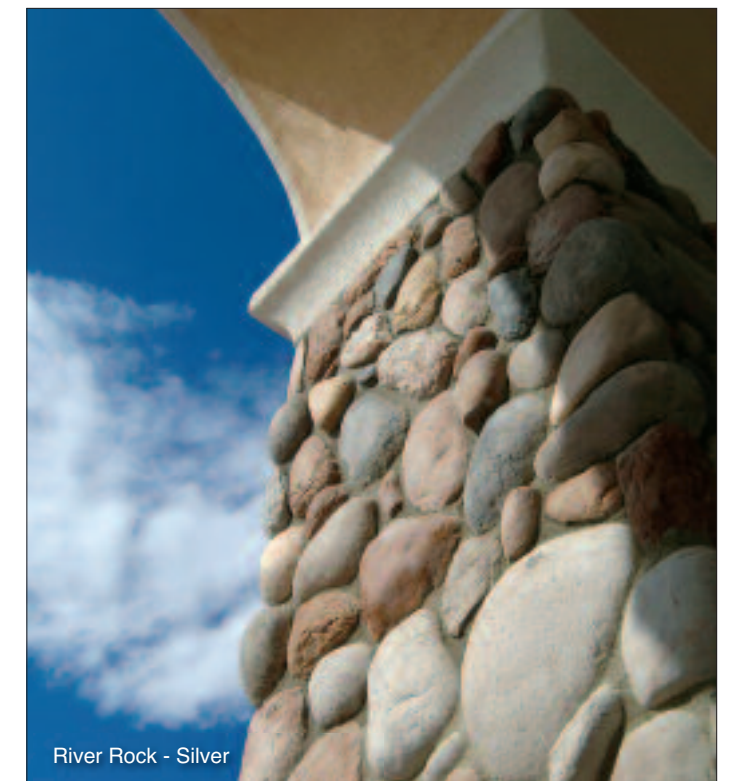
SILVER



TRINITY



River Rock - Silver



River Rock - Silver

River Rock is also available in most colors presented in this brochure.
Colors and shades printed here are as true a match as the printing process will allow. For best matching results, please refer to actual samples.

Limestone, Coral & Cast Stone



Limestone - Sorrento
Custom installation

Limestone. The elegant rough surface of our Limestone mimics that found in quarried cut limestone blocks.

Application. Mortared

Pattern. Linear

Limestone, Saw Cut & Cast Stone Flats. 12" H X 24" L; average thickness of 1-1.25"

Limestone, Saw Cut & Cast Stone Corners. Height of 12", short return 2.5", long return 14.5"; with an average thickness of 1-1.25"

Coral Stone consists of various sizes ranging from 4 to 12" H X 4 to 16" L; with an average thickness of 1"

Limestone



CORBIN CROSSING



COWBOY



SORRENTO



EAGLE CREEK



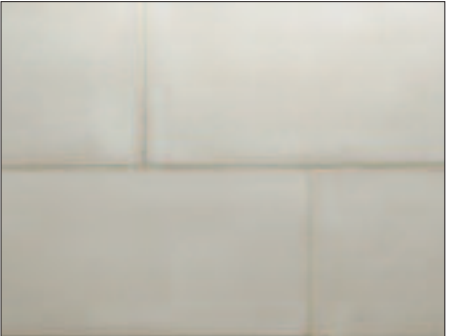
Limestone - Sorrento
Custom installation

Saw Cut



CENTEX

Cast Stone



CENTEX

Coral Stone



BAHAMA

Colors and shades printed here are as true a match as the printing process will allow. For best matching results, please refer to actual samples.

Thin Brick



King Thin Brick - Red with Black

Thin Brick. Create lasting beauty and elegance with our thin brick, available in a variety of sizes, styles and colors. Our thin brick allows you to create beautiful interiors & exteriors without the impact on our environment and added expense of full size brick.

Application. Mortared

Pattern. Random

King Thin Brick Flats. 2.5" H X 9.5" L; average thickness of ¾"

King Thin Brick Corners. Height of 2.5", short return 2", long return 7"; with an average thickness of ¾"

Antique Thin Brick Flats. 2" H X 7" L; average thickness of ¾"

Antique Thin Brick Corners. Height of 2", short return 3", long return 6.5"; with an average thickness of ¾"



King Thin Brick



CITY BLEND



OAKS BLEND



RED



RED with BLACK



WINTER BLEND

The distinctive clean lines of our new **King Thin Brick** have quickly made it a popular choice among professional designers and architects. The "wire-cut" look allows for maximum versatility to create both classic and unique designs.

Antique Thin Brick



DALLAS



RED



RED with BLACK

The softened, tumbled edges of our **Antique Thin Brick** give it the "Old-World" look, feel, & texture that have made it a favorite for both commercial & residential projects.

Thin Brick is also available in most colors presented in this brochure.
Colors and shades printed here are as true a match as the printing process will allow. For best matching results, please refer to actual samples.

Creative Blend Ideas



Ledgestone with Field Stone - Rustone

Your choices... Enhance the beauty of Veneerstone by combining different profiles. Your creative possibilities become endless.

Creative Blend Ideas



AUTUMN



HICKORY



MINERAL COUNTY



RUSTONE



Pacific Ledgestone with Field Stone, Blue Creek



Ledgestone with Field Stone - Rustone

Colors and shades printed here are as true a match as the printing process will allow. For best matching results, please refer to actual samples.

ACCENT & ACCESSORY PIECES

Our coordinated trim pieces and accessories include header stones, pyramid wall coping, flat wall coping, pyramid capstones, watertables, lightboxes/switchboxes, keystones, hearthstones, and cobble accent stones.

Veneerstone by Tejas Textured Stone accent pieces are the perfect finishing touch for any project. These pieces coordinate perfectly with the textures, colors and integrity of Veneerstone.

KEYSTONES & HEADER STONES



10" L x 7.75" W to 4.75" W 2.5" Thick



22.5" L x 8" W 2.5" Thick

PYRAMID WALL COPING STONES



19.25" L x 11.75" W x 2" Thick 2.75" Thick at Center Point

COBBLE ACCENT STONES



7.5" L x 4.75" W 2" Thick

PYRAMID CAPSTONES



29" L x 29" W x 2.25" Thick 4.75" Thick at Center Point

LIGHTBOXES / SWITCHBOXES



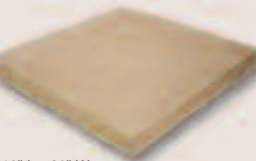
11" L x 7.25" W x 1.75 Thick Inside Dimensions are 4.5" L x 4.25" W

WATERTABLES / WINDOW SILLS



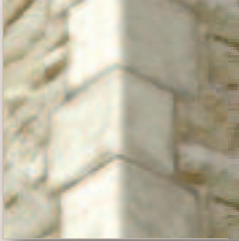
18" L x 3.5" W 2" Thick at Front Edge 2.5" Thick at Back Edge

HEARTHSTONES & FLAT WALL COPING STONES



19" L x 20" W 1.75 Thick

QUOIN CORNERS



11.5" L x 9.5" W x 8" Tall 1" - 1.5" Thick

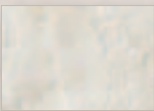
STONE COLOR & COMPANION COLOR GUIDE

STONE COLOR:	COMPANION:	STONE COLOR:	COMPANION:	STONE COLOR:	COMPANION:
Autumn	Tan	Eagle Creek	Centex	Redwood	Tan
Blue Creek	Gray	El Monte	Tan	Rustone	Tan
Buckeye	Centex	Harvard	Tan	Savoy	Tan
Caramel	Centex	Hickory	Tan	Sorrento	Centex
Canyon Blend	Centex	Indian Springs	Tan	Silver	Gray
Cedar City	Tan	Malbeck	Tan	Slate	Gray
Chalk	Chalk	Mesa Gray	Centex	Solstice	Gray
Chardonnay	Centex	Millsap	Tan	Texas Cream	Centex
Corbin Crossing	Centex	Mineral County	Ash	Trinidad	Tan
Cowboy	Gray	Mt Trumball	Tan	Trinity	Tan
Creede	Ash	Pasco	Gray	Ventura	Tan
Desert Sand	Tan	Pine Springs	Ash		

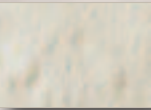
COMPANION COLORS AVAILABLE



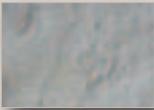
ASH



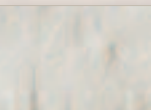
CHALK



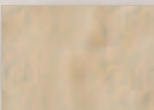
CREAM



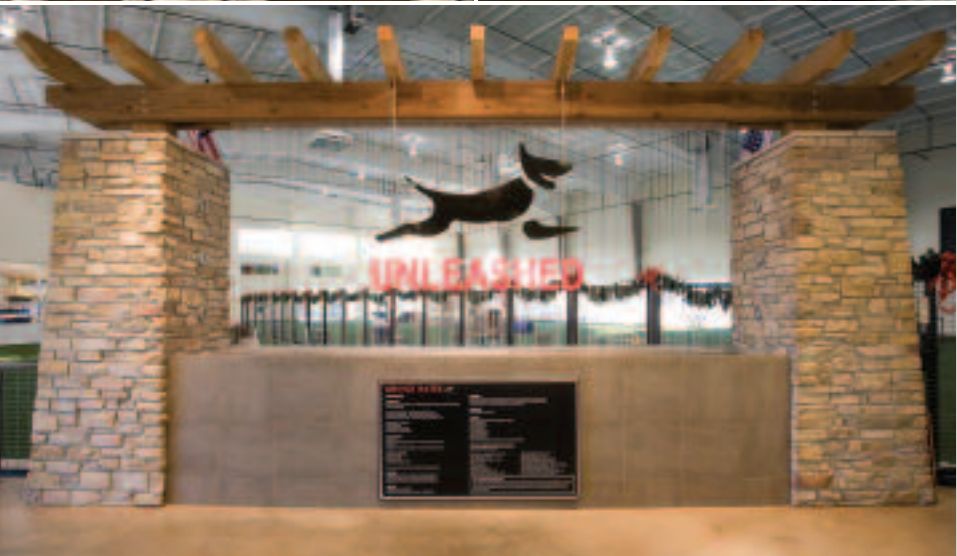
GRAY



CENTEX



TAN



Remodeling Made Easy With Veneerstone



BEFORE



AFTER



BEFORE



AFTER



BEFORE



AFTER



BEFORE



AFTER



BEFORE



AFTER

Step-By-Step Easy Installation Instructions



Install Water Resistive Barriers.
(exterior applications)



Install corrosion resistant
metal lath.



Mix mortar.



Apply mortar for scratch coat.



Rake mortar to create
scratch coat. Allow to Dry.



Apply mortar to the entire
back of the stone.



Install corner stones first.



Install flat stones.



Trim stones to fit.



Grout joints.



Strike joints.



Brush off excess mortar
with a dry brush.

Tips For Installing Veneerstone Over Masonry and Brick



For best results always use a bonding agent
when installing Veneerstone directly over concrete,
masonry, stucco, brick and block.



For the most up to date installation instructions,
please visit our website www.veneerstone.biz

Tools Required



- Hammer to apply felt paper and metal lath.
- Wheel Barrow & Hoe or Bucket & Drill Paddle for mixing mortar.
- Notched Float to apply scratch coat to metal lath.
- Circular Saw with Masonry Blade for cutting stone.
- Mason's Trowel to apply mortar to Tejas Stone.
- Grout Bag for grouting joints.
- Jointing Tool to finish mortar joints.
- Whisk Broom for cleaning joints and stone.

How Much Stone Do You Need?

Just follow these easy steps to determine how much Veneerstone you will need.

1. Measure the width and the height of the area to be covered and convert to square footage; width x height = total square footage.
2. Figure the square feet of any windows, doors and openings and subtract this amount from the first figure. (total square footage – windows, doors and openings).
3. Determine how many linear feet of corners you'll need. Measure the linear footage of the outside corner pieces. One linear foot of corners will cover about 1/2 square foot of flat area – ie, 20 linear feet of corners = 10 square feet of flat area. Subtract this flat area amount from the total square footage to determine how much total stone you will need. You should allow an extra 5 -10% more stone for cutting and trimming on both corners and flats.

Materials You Will Need

- **Mortar Components**
Use pre-mixed masonry mortar, or mix 1 part masonry cement (Type N or Type S) with 2 1/4 to 3 parts masonry sand.
- **Water Resistive Barrier**
For exterior applications, use two layers of Water Resistive Barrier. Use 15# felt (ASTM D 226), Grade D building paper (ICC-ES AC38), or house wrap and paper backed lath.
- **Metal Lath**
Use a minimum 2.5 pound corrosion resistant, expanded metal lath. Or, you may use 18 gauge galvanized woven wire mesh. For metal buildings, use a galvanized, rib expanded metal lath (minimum 3.4 pounds 3/8"). Check your local building codes for other accepted lath or mesh.
- **Fasteners**
Use corrosion resistant fasteners (staples, nails, or screws) that penetrate minimum 1" into wood framing or 3/8" into metal framing.
- **Masonry Sealer**
When required, use a breathable type (non-film forming) sealer.

Note: For every 100 sq. ft. of stone installed, you will need 2 to 3, 70 lb. bags masonry mortar (sand must be added at a ratio of 1 part masonry mortar to 3 parts sand) OR, 560-840 lbs. of pre-mixed masonry mortar (sand included in bag).

How To Prepare The Surface

Follow these guidelines in preparing different surfaces.

- **Rigid Backwall, Wallboard, Plywood, Paneling, Wall Sheathing Concrete or Fiber board.**
For exterior applications, install water resistive barriers, overlapping the joints 2" horizontally shingle style and 6" vertically. Ensure that all penetrations (doors, windows) are properly flashed & sealed. Double wrap WRB at inside & outside corners a minimum of 16" – each side. Then install lath, horizontally with cups up. Overlap lath 1" on horizontal & vertical seams. Lath must wrap corners to the next framing member and at framing member. Lath should be fastened every 6" vertically on each stud.
- **Concrete, Masonry, Stucco, Block That Is Clean and Untreated.**
Ensure surface is sound and clean, free from release agents, paint, form oil, and sealers. Etch or score the surface to enhance mechanical bond. Surface applied bonding agents may be used.

- **Concrete, Masonry, Stucco, Brick That Is Dirty, Sealed or Painted.** Return surface to original condition by sandblasting or waterblasting (wash area to remove sandblast dust). If unable to achieve a suitable bonding surface, attach lath with concrete nails or masonry anchors. Use a bonding agent.

Applying Veneerstone

- **Surface Area**
Use a notched float to apply mortar 1/2" to 3/4" thick.
- **Joint Width**
If mortared application is specified, joints should be 1/2" to get the most natural look.
- **Setting Stones In Mortar**
Cover the entire back of the stone with mortar and press the stone firmly into the mortar bed to ensure a good bond. Press hard enough to squeeze out a little mortar around all the edges of the stone. Make sure you have complete coverage between the mortar bed and the surface of the stone.
- **Corner Pieces**
Corner pieces should be installed first. Alternate the long and short legs on the corner pieces in opposite directions.
- **Flat Pieces**
After the corner pieces are installed apply flat pieces starting at the outside working in toward the wall center.
- **Cutting and Trimming**
Use the rear of the brick hammer, edge of trowel, nippers or a circular saw with an abrasive blade to cut and shape stones. If necessary, broken stones can be trimmed and shaped to fill in any gaps. For the most attractive finished appearance, coat with mortar any cut or broken edges. Also, try to place cut edges up when they are above eye level and down when they are below eye level.
- **Level and Plumb Joint Lines**
Joint lines should be level and plumb. For a more natural look, place long, rectangular pieces of stone horizontally.
- **Mortarless Joint Applications**
In mortarless joint applications where no mortar joints are used, use a bonding agent and seal with a breathable (non-film-forming) sealer.

Grouting & Finishing Joints

- **Grouting Joints**
If more mortar is needed, fill in the joints with a mortar bag, taking care to avoid getting mortar on the stones' surface. Any accidental smears can be removed with a whisk broom after the mortar is crumbly. Never use a wet brush or wire brush.
- **Finishing Joints**
Proper jointing gives your project an appealing and professional finish. Before finishing, allow mortar joints to become firm (approximately 30-60 minutes), then point them up with a metal jointing tool. Weather conditions and the type of surface both influence drying time. Remove excess mortar then firmly compress and seal the edges around the stones. Brush stones and joints with a whisk broom to finish and clean the project.



Producers of Quality Manufactured Stone & Thin Brick

Packaging: Flat Stones: Pallets are packaged 150 square feet per pallet. 10 square feet Handy Box packages are available for smaller quantities.

Corner Stones: Pallets are packaged with 100 linear feet per pallet. 10 linear feet Handy Box packages are available for smaller quantities.

Thin Brick Flat Stones: 30 square feet per box. Thin Brick Corner Stones: 15 linear feet per box.

All packaged quantities are figured with one half inch mortar joint except for Stack Stone, Ledge Stone, & Imperial Stack Stone.

When installing stone, it has been determined that broken pieces can and should be used.

VENEERSTONE BY TEJAS TEXTURED STONE MEETS OR SUBSTANTIALLY EXCEEDS THE MINIMUM PHYSICAL REQUIREMENTS SPECIFIED BY THE ICC-ES AC 51.

Density: ASTM C 567

Moisture absorption: UBC Standard 15-5

Compressive Strength: ASTM C 192, C 39

Tensile Strength: ASTM C 190

Flexural Strength: ASTM C 348

Bond Strength: ASTM C 482

Freeze/Thaw: ASTM C 67

WARNING: Concrete veneer contains Crystalline Silica (quartz) and traces of other hazardous substances which are released as dust and can be inhaled when dry-cutting, drilling, or shaping the product. Crystalline Silica is a chemical known to the State of California to cause cancer, birth defects, and other reproductive harm. Use appropriate safety precautions.

Raw materials used in production may vary slightly. We recommend that you blend stones from different boxes throughout your installation area.

Variations are inherent in all manufactured stone and concrete products. Questions regarding suitability and/or acceptability must be resolved before installation. Use constitutes acceptance.

LIMITED WARRANTY: Veneerstone carries a 75-year limited warranty when used on structures that conform to all local building codes. Material must be installed according to manufacturer's installation instructions.

Warranty is limited to replacement of defective materials only and does not cover labor to remove or replace stone. Warranty does not cover damage resulting from building settlement, wall movement, contact with chemicals or paint, discoloration due to airborne contaminants or stains caused by material applied to or allowed to come in contact with stone. Warranty is non-transferable and is limited to the original purchaser.

© 2011 Veneerstone. All Rights Reserved.



Available nationwide from plants and distributors coast to coast.

1720 COUCH DRIVE • MCKINNEY, TEXAS 75069 • Tel. 214.491.5100 • Fax 214.491.5090

2155 WEST LANDSTREET ROAD • ORLANDO, FLORIDA 32809 • Tel. 407.240.6444 • Fax 407.240.6226

4342 DUDLEY BOULEVARD BLDG. 475A • McCLELLAN, CALIFORNIA 95652 • Tel. 916.640.8140 • Fax 916.640.8143

TOLL FREE 866.578.5616 • www.veneerstone.biz



MADE IN THE USA